



# Ron Greig



## Independent Valuation Surveyors and Estate Agents

Chadwick House, 127 York Road, Hartlepool, TS26 9DL | 01429 865544 | www.rongreig.co.uk | sue@rongreig.co.uk

### 2 Bed Bungalow For Sale in West Park Egerton Road



Ref: S454

Price: £269,950

2 2

#### Property Features

Mode Type: For Sale  
Property Type: Bungalow  
Bathrooms: 2  
Bedrooms: 2  
Area: West Park  
Town: Hartlepool

#### Advertised Since:

17th March 2020 by  
Hartlepool Office  
Agent Address: 'Chadwick House' 127 York Road, Hartlepool, TS26 9DL  
Agent Email: hartlepool@rongreig.co.uk



### About this property...

Situated in this much sought after area at West Park A BEAUTIFUL EXTENDED TWO BEDROOMED DETACHED BUNGALOW in immaculate order throughout being fitted out to an exceptionally high standard making it ready for occupation without further expense and having the benefit of A LOVELY SUNNY REAR GARDEN. The excellent well planned spacious accommodation briefly comprises Entrance Hall. Delightful Spacious Through Lounge. Excellent Kitchen. Conservatory overlooking sunny rear garden. Office. Two Double Bedrooms. Bathroom. Roof Space Room ideal for hobbies (accessed by pull down ladder from office). Well laid out sunny rear garden. Garage approached by drive. The property is installed with gas central heating and uPVC double glazing.

Although every care is exercised to ensure that these particulars are accurate, no responsibility is accepted for any errors, inaccuracies or omissions, or for any time, trouble, or abortive expense incurred by applicants as a result thereof, and they do not constitute a collateral warranty or form any part of a contract.

Ron Greig is a practising name of Ron Greig Estates (Hartlepool) Limited. A company registered in England and Wales No. 9475757. Reg Office: Exchange Buildings, 66 Church Street, Hartlepool, TS24 7DN



# Ron Greig



## Independent Valuation Surveyors and Estate Agents

Chadwick House, 127 York Road, Hartlepool, TS26 9DL | 01429 865544 | [www.rongreig.co.uk](http://www.rongreig.co.uk) | [sue@rongreig.co.uk](mailto:sue@rongreig.co.uk)

### Property Rooms



#### Entrance Hall

**Measurements: 12'3" x 10'6"**

solid oak flooring, uPVC front door, coved ceiling, ceiling fitted halogen lighting, radiator and ceiling fitted Envirovent vent



#### Delightful Spacious Through Lounge

**Measurements: 23'4" x 13'3"**

with solid marble fire surround with marble hearth and interior inset coal effect electric fire, coved ceiling, ceiling fitted halogen lighting, radiator and double glazed French doors to Conservatory



#### Lounge



#### Lounge



#### Excellent Kitchen

**Measurements: 12'8" x 8'7"**

with range of high gloss units comprising cupboard and drawer units with heat resistant working surfaces, inset single drainer sink with swivel mixer tap, four ring gas hob with extractor above and double electric oven below, integrated fridge freezer, automatic washer, additional freezer, all with tiled surrounds, matching wall units, solid oak flooring, coved ceiling, ceiling fitted halogen lighting and double glazed French doors to Conservatory



**Kitchen**



**Conservatory**

**Measurements: 20'4" x 10'9"**

with solid oak flooring, radiator and ceiling fitted halogen lighting



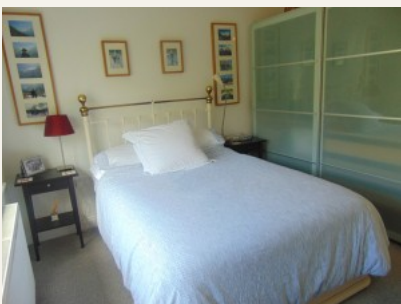
**Conservatory**



**Bedroom No. 1**

**Measurements: 11'7" x 10'11"**

with coved ceiling, radiator and wardrobes



**Bedroom No. 1**



**Bedroom No. 2**

**Measurements: 12'2" x 11'8"**

with coved ceiling, radiator and wardrobes



### **Bedroom No. 2**



### **Bathroom**

**Measurements: 8'5" x 7'4"**

bath with mixer tap, wash hand basin set in vanity unit with cupboards below and mixer tap, close coupled W.C., shower cubicle with mains shower, heated towel rail and ceiling fitted halogen lighting



### **Office**

**Measurements: 8'7" x 11'2" max narrowing to 6'9"**

with laminate flooring, ceiling fitted halogen lighting and wall mounted oil filled electric heater

### **Cloakroom**

wash hand basin with mixer tap and cupboards below, close coupled W.C. and oil filled electric heated towel rail



### **Roof Space Room Accessed By Ladder Access From Office**

**Measurements: 8'7" x 13'0"**

ceiling fitted halogen lighting, Velux window and laminate flooring

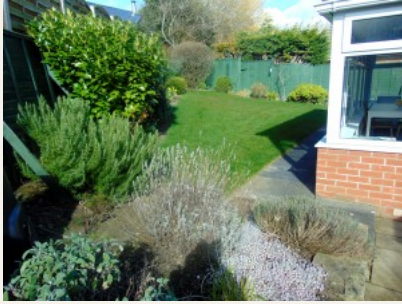
### **Outside**



### **Beautiful Well Laid Out Sunny Rear Garden**



**Garden**



**Garden**

**Garage Approached By Block Paved Drive Providing Ample Off Street Parking**

**Viewing: By appointment through the agents.**

**Mortgages at Ron Greig**

- \*Professional advice to help you select the most suitable mortgage to meet your particular requirements and objectives
- \*Computerised mortgage sourcing systems giving access to both high street lenders and to broker specific special deals with 'decisions in principle' in minutes and Mortgage Certificates issued (subject to status)
- \*Fully managed mortgage tracking from submission of application right through to release of funds

Call **01429 865544** to arrange a free consultation at your convenience

**YOUR HOME IS AT RISK IF YOU DO NOT KEEP UP REPAYMENTS ON A MORTGAGE OR OTHER LOAN SECURED ON IT.**

---

The measurements provided in these particulars are for guidance purposes only, their accuracy is not guaranteed and if necessary they should be checked by the purchasers. 2. Ron Greig Limited or any member of this firm, do not give any warranty as to the condition of the property, fittings or installations, none of which have been tested for this purpose and for which it will be the responsibility of the purchaser to satisfy his/her own requirements. 3. Although we endeavour to provide accurate Sales Particulars, these must not be relied upon as statements or representations of fact, they do not constitute a collateral warranty of form any part of contract and the purchaser should verify that all information provided is correct before proceeding with a purchase.

---

Although every care is exercised to ensure that these particulars are accurate, no responsibility is accepted for any errors, inaccuracies or omissions, or for any time, trouble, or abortive expense incurred by applicants as a result thereof, and they do not constitute a collateral warranty or form any part of a contract.

Ron Greig is a practising name of Ron Greig Estates (Hartlepool) Limited. A company registered in England and Wales No. 9475757. Reg Office: Exchange Buildings, 66 Church Street, Hartlepool, TS24 7DN