



Ron Greig



Independent Valuation Surveyors and Estate Agents

Chadwick House, 127 York Road, Hartlepool, TS26 9DL | 01429 865544 | www.rongreig.co.uk | sue@rongreig.co.uk

5 Bed House For Sale in Seaton Carew Endeavour Close

Ref: S263

Price: £329,950
Offers In Excess
Of



5



3

Property Features

Mode Type: For Sale
Property Type: House
Bathrooms: 3
Bedrooms: 5
Area: Seaton Carew
Town: Hartlepool

Advertised Since:

12th March 2018 by
Hartlepool Office
Agent Address: 'Chadwick
House' 127 York Road,
Hartlepool, TS26 9DL
Agent Email:
hartlepool@rongreig.co.uk



About this property...

A full inspection is essential to appreciate THIS STUNNING FIVE BEDROOMED INDIVIDULLY BUILT PROPERTY for which no expense has been spared by the present owners to bring the property up to the highest of standards which is without doubt a credit to them. The property occupies a large site near the head of a pleasant cul de sac and is within walking distance of the sea front. The property has been extended to provide much better accommodation than most other properties in the area and which ideally meets family requirements both by reason of its size and location. Recently fully re decorated internally and externally including new carpets to most rooms. Entrance Porch. Entrance Hall. Delightful Lounge. Office. Dining Room. Conservatory. Excellent Dining Kitchen. Sun Lounge. Utility. Cloakroom. Five Double Bedrooms. (three with En Suite including Jack & Jill). Family Bathroom. Garage....

Although every care is exercised to ensure that these particulars are accurate, no responsibility is accepted for any errors, inaccuracies or omissions, or for any time, trouble, or abortive expense incurred by applicants as a result thereof, and they do not constitute a collateral warranty or form any part of a contract.

Ron Greig is a practising name of Ron Greig Estates (Hartlepool) Limited. A company registered in England and Wales No. 9475757. Reg Office: Exchange Buildings, 66 Church Street, Hartlepool, TS24 7DN



Ron Greig



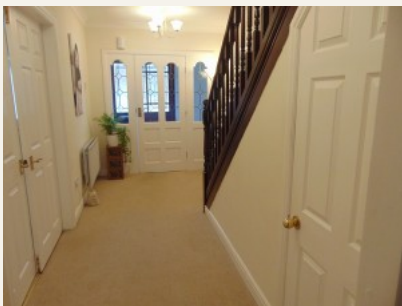
Independent Valuation Surveyors and Estate Agents

Chadwick House, 127 York Road, Hartlepool, TS26 9DL | 01429 865544 | www.rongreig.co.uk | sue@rongreig.co.uk

Property Rooms

Entrance Porch

with laminate flooring



Entrance Hall

Measurements: 15'5" x 10'7"

with a double panel radiator, coved ceiling and spindled balustrade to staircase



Delightful Lounge

Measurements: 19'6" x 12'5"

Oak veneered fire surround with concealed lighting specially made by the Reproduction Centre with black granite hearth and interior with inset living flame coal effect gas fire



Lounge

Office

Measurements: 14'10" x 7'7"

with coved ceiling, very large walk in shelved storage cupboard and electric underfloor heating



Dining Room

Measurements: 15'6" x 12'4"

with coved ceiling, centre five light fitting and two wall lights, double panel radiator and double doors leading into the conservatory



Dining Room

Conservatory

Measurements: 11'4" x 8'7"



Fully Referbished Dining Kitchen

Measurements: 16'2" x 15'3"

with a range of units comprising base cupboard and drawer units with heat resistant working surfaces, inset single drainer sink with swivel mixer tap, double cooking range (less than one year old) with extractor above and stainless steel splashback, dishwasher, central island breakfast bar with cupboard and drawers and fridge, ceiling fitted halogen, solid oak flooring to kitchen area.



Fully Referbished Dining Kitchen



Sun Lounge

Measurements: 14'2" x 10'3"

with double French doors to rear garden, three Velux roof windows, ceiling fitted halogen lighting, underfloor heating

Utility Room

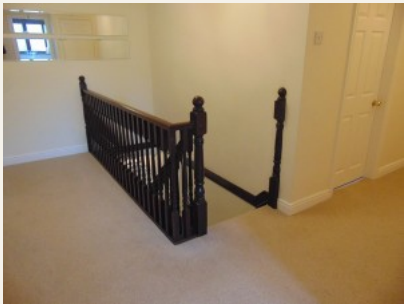
Measurements: 11'5" x 7'8"

with roll edge heat resistant working surfaces with stainless steel sink and swivel mixer tap, wall units, space and plumbing for washer and dryer, new flooring, new condensing boiler with 10 year parts and labour guarantee.

Cloakroom

with new flooring, low level W/C, wash hand basin and radiator

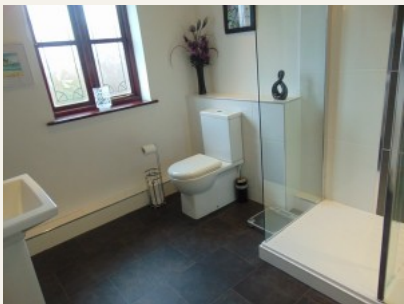
First Floor



Landing
with coved ceiling and shelved storage cupboard



Bedroom No.1
Measurements: 17'9" x 12'5"
with mirror fronted wardrobes, coved ceiling, fitted inset lighting and radiator and slate tiled headboard with concealed lighting



Recently Refitted En-Suite
with double shower, low level W/C, pedestal wash basin and heated towel rail



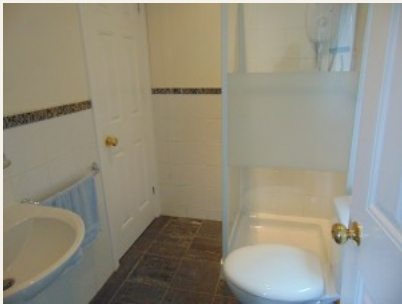
Bedroom No. 2
Measurements: 13'7" x 12'4"
with fitted wardrobes, radiator and coved ceiling



Bedroom No. 2



Bedroom No.3
Measurements: 14'0" x 10'9"
with fitted wardrobes



Jack and Jill En-Suite

with fully tiled walk in shower cubicle, pedestal wash basin, low level W/C, radiator and tiled floor

Bedroom No.4

Measurements: 11'0" x 7'10"

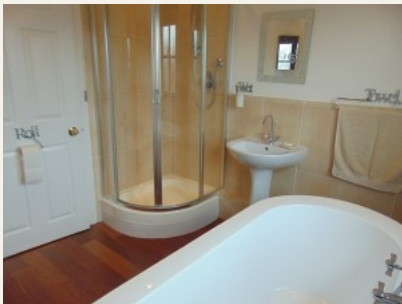
with fitted wardrobe and radiator



Bedroom No.5

Measurements: 19'11" x 8'2"

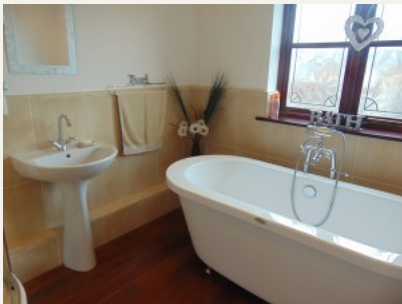
with coved ceiling and double panel radiator



Half Tiled Family Bathroom

Measurements: 8'3" x 8'5"

with roll edged free standing bath, with mixer tap and shower attachment, pedestal wash basin, low level W/C, fully tiled walk in shower cubicle with main shower, hardwood flooring, ceiling fitted halogen lighting, inset ceiling coloured LED lighting



Half Tiled Family Bathroom

Outside

Garage

Measurements: 19'7" x 7'9"

with up and over door, fluorescent strip light and power points. Plumbing for a large American fridge.

Well laid out rear garden

decked patio, lawn screened by mature trees making it very private

Viewing: By appointment through the agents.

Mortgages at Ron Greig

- *Professional advice to help you select the most suitable mortgage to meet your particular requirements and objectives
- *Computerised mortgage sourcing systems giving access to both high street lenders and to broker specific special deals with ‘decisions in principle’ in minutes and Mortgage Certificates issued (subject to status)
- *Fully managed mortgage tracking from submission of application right through to release of funds

Call **01429 865544** to arrange a free consultation at your convenience
YOUR HOME IS AT RISK IF YOU DO NOT KEEP UP REPAYMENTS ON A MORTGAGE OR OTHER LOAN SECURED ON IT.

The measurements provided in these particulars are for guidance purposes only, their accuracy is not guaranteed and if necessary they should be checked by the purchasers. 2. Ron Greig Limited or any member of this firm, do not give any warranty as to the condition of the property, fittings or installations, none of which have been tested for this purpose and for which it will be the responsibility of the purchaser to satisfy his/her own requirements. 3. Although we endeavour to provide accurate Sales Particulars, these must not be relied upon as statements or representations of fact, they do not constitute a collateral warranty of form any part of contract and the purchaser should verify that all information provided is correct before proceeding with a purchase.