



Ron Greig



Independent Valuation Surveyors and Estate Agents

Chadwick House, 127 York Road, Hartlepool, TS26 9DL | 01429 865544 | www.rongreig.co.uk | sue@rongreig.co.uk

4 Bed Bungalow For Sale in Hutton Henry Millfield Cottage



Ref: S645

Price: £450,000
Offers In Region
Of



4



2

Property Features

Mode Type: For Sale

Property Type: Bungalow

Bathrooms: 2

Bedrooms: 4

Area: Hutton Henry

Town: Durham



Advertised Since:

12th January 2024 by
Hartlepool Office
Agent Address: 'Chadwick
House' 127 York Road,
Hartlepool, TS26 9DL
Agent Email:
hartlepool@rongreig.co.uk

About this property...

Situated in the village of Hutton Henry with easy commuting both north and south via the A19. Millfield Cottage is a THREE/FOUR BEDROOMED DORMER BUNGALOW built in 2011 SET IN JUST UNDER HALF AN ACRE WITH VIEWS OVER ROLLING COUNTRYSIDE. Occupying a very private position which can only be appreciated by a full inspection. The excellent spacious well planned accommodation briefly comprises:- Large Entrance Hall with galleried landing, oak staircase and dining area. Delightful Lounge with marble marble fireplace and multi fuel stove overlooking open countryside. Study/Fourth Bedroom. Hallway to W.C. and Utility. Excellent Open Plan Family Room/Kitchen. Master Bedroom with En Suite. First Floor: Two Double Bedrooms. Main Bathroom. Outsided Double Deteached Garage approached by large block paved drive. Beautiful Sunny Rear Garden with fabulous views over open countryside.

Although every care is exercised to ensure that these particulars are accurate, no responsibility is accepted for any errors, inaccuracies or omissions, or for any time, trouble, or abortive expense incurred by applicants as a result thereof, and they do not constitute a collateral warranty or form any part of a contract.

Ron Greig is a practising name of Ron Greig Estates (Hartlepool) Limited. A company registered in England and Wales No. 9475757. Reg Office: Exchange Buildings, 66 Church Street, Hartlepool, TS24 7DN



Ron Greig



Independent Valuation Surveyors and Estate Agents

Chadwick House, 127 York Road, Hartlepool, TS26 9DL | 01429 865544 | www.rongreig.co.uk | sue@rongreig.co.uk

Property Rooms



Impressive Large Entrance Hall

Measurements: 22'5" x 23'8" narrowing to 13'7"

two Velux roof windows, galleryed landing, oak staircase and dining area



Delightful Lounge

Measurements: 19'6" x 13'11"

marble fire surround with marble hearth and interior, coved ceiling, ceiling fitted spot lighting and two radiators



Lounge



Study/Bedroom No. 4

Measurements: 19'4" x 9'1"

coved ceiling and tiled floor



Master Bedroom

Measurements: 17'2" x 11'8"

coved ceiling and radiator



Master Bedroom



Part Tiled En Suite

Measurements: 10'6" x 6'9"

Jacuzzi bath with mixer tap and shower attachment, double shower cubicle with mains rainfall shower, close coupled W.C., wash hand basin with mixer and cupboard below

Walk In Wardrobe



Open Plan Family Room/Kitchen with fabulous views over open countryside

Measurements: 27'11" x 11'2"

modern kitchen with painted oak facias and quartz worktops, integrated fridge/freezer, double oven, hob and dishwasher. Leading onto family room with glass roof and with French doors to rear south facing garden.



Family Room



Family Room



Family

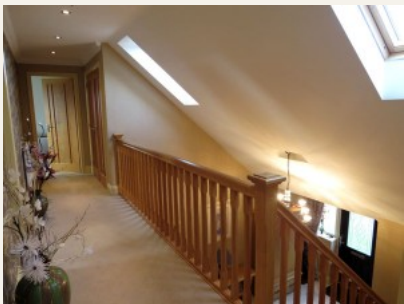
Utility

with range of units matching kitchen comprising base cupboard and drawer units with granite working surfaces, single drainer sink with swivel mixer tap, matching wall units and coved ceiling

Cloakroom

with low level W.C., wash hand basin with mixer tap and cupboard below and tiled floor

First Floor



Large Landing

with coved ceiling and spot lighting, two large storage cupboards



Bedroom No. 2 with fabulous views over open countryside

Measurements: 24'2" x 11'0"

two radiators



Main Bathroom

Measurements: 13'5" max x 9'6"

shower area with mains shower, low level W.C., wash hand basin with mixer tap, bath, heated towel rail and tiled floor






Bathroom



Bedroom No. 3 with fabulous views over open countryside

Measurements: 24'2" x 11'0"

two radiators and two storage cupboards

	Bedroom No. 3
Outside	
Double Detached Garage approached by large block paved drive providing ample off street parking	
	Beautiful Sunny Rear Garden With Fabulous Views Over Open Countryside with log cabin/summerhouse and greenhouse , land ideal for vegetables and landscaping
	View
Rear	

Viewing: By appointment through the agents.

Mortgages at Ron Greig

- *Professional advice to help you select the most suitable mortgage to meet your particular requirements and objectives
- *Computerised mortgage sourcing systems giving access to both high street lenders and to broker specific special deals with ‘decisions in principle’ in minutes and Mortgage Certificates issued (subject to status)
- *Fully managed mortgage tracking from submission of application right through to release of funds

Call **01429 865544** to arrange a free consultation at your convenience

YOUR HOME IS AT RISK IF YOU DO NOT KEEP UP REPAYMENTS ON A MORTGAGE OR OTHER LOAN SECURED ON IT.

The measurements provided in these particulars are for guidance purposes only, their accuracy is not guaranteed and if necessary they should be checked by the purchasers. 2. Ron Greig Limited or any member of this firm, do not give any warranty as to the condition of the property, fittings or installations, none of which have been tested for this purpose and for which it will be the responsibility of the purchaser to satisfy his/her own requirements. 3. Although we endeavour to provide accurate Sales Particulars, these must not be relied upon as statements or representations of fact, they do not constitute a collateral warranty of form any part of contract and the purchaser should verify that all information provided is correct before proceeding with a purchase.